

# SCIL VET ABC PLUS VERSION 2011.1 AND HIGHER

# TABLE OF CONTENTS

AVImark Setup .....3

Use .....6

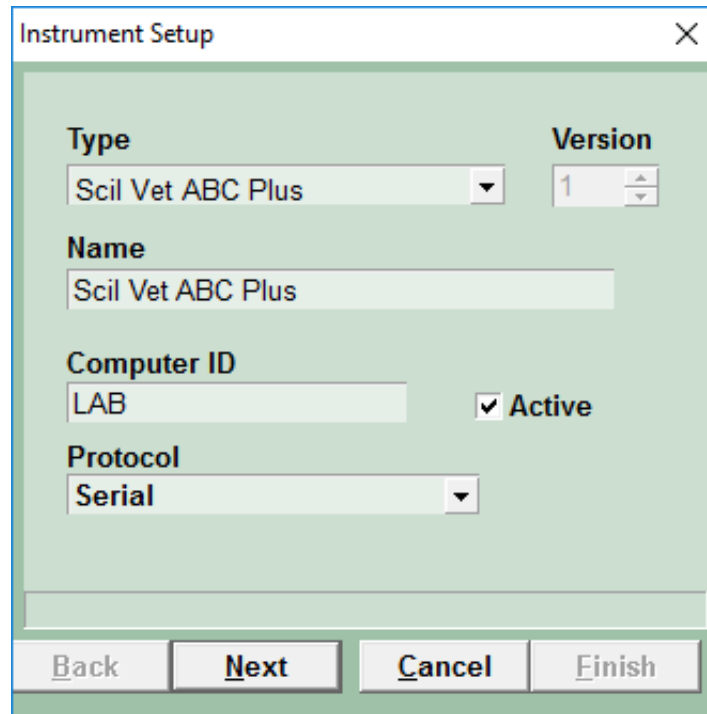
# AVImark Setup

From the AVImark workstation you wish to use for communication:

1. Select Instrument Management from the Services menu on the CID to open the Instruments window.
2. Open a new Instrument Setup window using a right-click | New.
3. Select Scil Vet ABC Plus from the available drop-down list.

The Name, Computer ID, and Protocol should automatically be populated with the proper information once the instrument has been selected.

4. Place a check in the Active box if not already defaulted to being checked.



The screenshot shows the 'Instrument Setup' dialog box. It features a title bar with a close button (X). The main area is divided into several sections: 'Type' with a dropdown menu showing 'Scil Vet ABC Plus'; 'Version' with a spinner box showing '1'; 'Name' with a text box containing 'Scil Vet ABC Plus'; 'Computer ID' with a text box containing 'LAB' and a checked 'Active' checkbox; and 'Protocol' with a dropdown menu showing 'Serial'. At the bottom, there are four buttons: 'Back', 'Next', 'Cancel', and 'Finish'.

5. Select Next and choose the appropriate Com Port. The Baud Rate should be set to 9600.
6. Click Finish to complete the instrument setup.

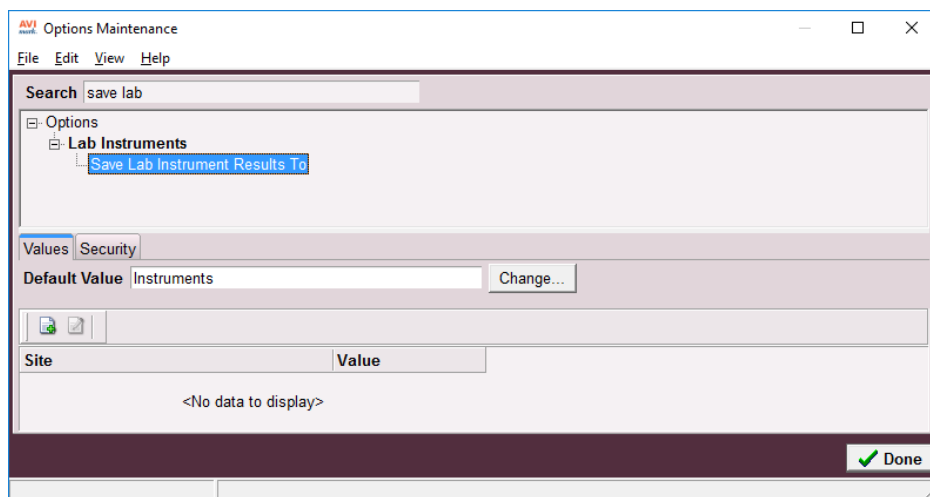
The ability to utilize a “Serial to USB Adapter Cable” for various lab instrument interfaces was tested in AVImark with limited success. You will need to check with your lab instrument manufacturer to see if they supply this Serial to USB Adaptor Cable or if they recommend one over another (for there are various brands and types available on the market). With this in mind, AVImark does not guarantee that they will ALL work or be recognized as a communication port by your computer workstation. AVImark is limited to the technical support we can provide if you choose to use this type of device for your lab machine to computer connection.

The ability to utilize a “Serial to USB Adapter Cable” for various lab instrument interfaces was tested in AVImark with limited success. You will need to check with your lab instrument manufacturer to see if they supply this Serial to USB Adaptor Cable or if they recommend one over another (for there are various brands and types available on the market). With this in mind, AVImark does not guarantee that they will ALL work or be recognized as a communication port by your computer workstation. AVImark is limited to the technical support we can provide if you choose to use this type of device for your lab machine to computer connection.

A storage folder which will receive the results from the LaserCyte is needed. This folder can be created inside the AVImark folder on the server computer. Once this storage folder is created, the path must be defined within the Hospital Setup | Advanced tab | Advanced Options | “Save Lab Instrument Results To”.

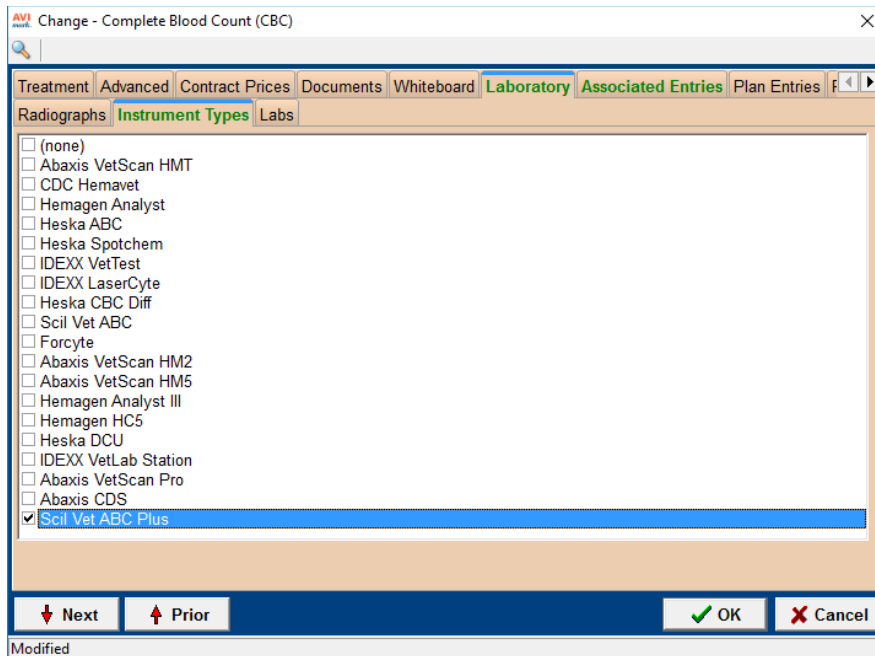


*This folder name CANNOT contain spaces. We recommend a folder named **instrument**.*




Assign your instrument to the Instrument Types tab of the appropriate AVImark treatment

1. From the CID menu, click on **Work with | Treatment List**.
2. Select the treatment and double-click to open the Change window.
3. Click on the **Laboratory** tab then click on the **Instrument Types** sub-tab.
4. Click to select **Scil Vet ABC Plus**.



5. Click **OK**.

---

 *You are able to assign multiple instruments to a single AVImark treatment. If you have more than one instrument that is used to perform a single treatment such as a pre-surgical panel, you are no longer required to have one AVImark treatment per instrument; or in the case that you have more than one instrument that can perform the same test, such as an IDEXX instrument and an Abaxis instrument that can each run the same CBC test.*

---


The Instrument Import utility is much the same as in previous AVImark versions.

- ✓ The utility can be found by accessing **Services | Run Instrument Import**.
- ✓ This utility is now set up to automatically start when AVImark starts, and has the option to Close on AVImark Shutdown.
- ✓ When AVImark opens you will see the “shaking hands” icon located in the System Tray of your workstation. This indicates that AVImark is in communication with the instrument(s) assigned to communication ports on this computer, and is “listening” on each port for any incoming data.



- ✓ The options to Start when AVImark opens, and Close on AVImark Shutdown can be controlled by right-click options on the icon in the System Tray.

---

 *If you have de-selected the Close on AVImark Shutdown option, please note you will need to manually close the connection utility prior to index rebuilding or any other maintenance utility that requires exclusive access to AVImark files. Once the instrument is properly assigned in Hospital Setup, and associated to the AVImark treatment(s), your setup is complete.*

---

## Use

When a treatment is entered into Medical History for a patient that has an instrument assignment, AVImark will start listening to the ports in which the associated instruments are assigned for results. As results are ready to be transmitted, AVImark will import the results to the proper Medical History entry. If the proper Medical History cannot be located, the results will be sent to the new “Test Inbox” to await manual import.

- ✓ First, the import utility looks for a patient with a record number that matches the “Patient ID” field received from the instrument.

The Patient ID that is being searched for a match is the AVImark Patient ID. To keep this ID displayed on the AVImark CID, go into **Hospital Setup | Advanced Options | “Display Patient Record Number”**; and set it to **“True”**.

- ✓ When running the test on the designated analyzer, and prompted for a patient identifier, the AVImark Patient ID is the number that will allow the utility to make the proper patient association for automatic result import.
- ✓ If this is successful, then the recent medical history of that patient is searched for a recorded treatment that is set to store results from the instrument.
- ✓ Once the patient identifier is located on the incoming results, the utility will begin searching for a Medical History entry for that patient that is awaiting results.
- ✓ When that Medical History entry is located, the results will be automatically imported into the Tests Attachment area.
- ✓ If the Patient ID doesn’t match or exist or there is no matching Medical History entry on that patient awaiting results, the test results are placed in the “Test Inbox. “
- ✓ To manually import the results that were sent to the Test Inbox, simply highlight the Medical History entry you wish to import results for, select the Tests attachment, Import From, Test Inbox. Here you will be presented with a list of results that were transmitted from instruments that did not find the Medical History entry to complete the automatic import. Select the set of results you wish to import to this history entry, and click Done.
- ✓ When you “Import from” the Test Inbox, the record is actually moved from the Test Inbox onto that Medical History entry. This will allow the Test Inbox to only contain results that have not been imported to Medical History.
- ✓ As an additional safety measure to ensure no results are lost, an RX\$ file is also created with the transmitted results. This RX\$ file is sent to the user defined Instruments storage folder.
- ✓ Results can be imported from this location if needed by opening the Tests attachment, select Import From, Stored Tests. This will display all stored RX\$ files on the left pane. You can select the RX\$ file that holds your test, move to the right pane, select the test, **right-click | Import Test**.
- ✓ In the case of an emergency, where access to results is immediately needed, **right-click** on the treatment in Medical History that has the lab instrument association that represents the test instrument being used, and select **Import Results**. This will open the Associated Instruments window displaying a list of associated instruments for this treatment. Place a check in the box that represents the instrument from you wish to receive results, click the Import Results button, and AVImark will begin listening to these ports. As the data is sent from the instrument via the port, AVImark will capture and place it immediately in the Test Results window. After the results are received, the Import Results window will disappear, and you can view the results by selecting the Tests attachment option for that Medical History entry.



*To alleviate the chance of sending results automatically to the wrong Medical History record that may also meet the requirements for automatic import selection we have incorporated a two day time frame to use for searching, then selecting the oldest entry in that time frame for which these results would apply, to make the result attachment. To summarize, the utility will look for that patient record, then start at the farthest date/time as dictated by the two day time frame, and apply it to the first one it finds....versus starting with the most recent and looking back.*